

# STEDFAST

---

## Belt Alignment Switch

---

### Description

This robust unit is designed to give consistent and reliable operation when used in the most demanding of environments such as the conditions encountered in mines and quarries. These units are used in pairs, one on each side of the conveyor to be protected at those points where mis-alignment is likely to occur.

The unit is equipped with a switch which is activated when mis-alignment of the conveyor occurs and thus the conveyor can be stopped before the conveyor or the associated rollers are damaged.

### Construction

The switch and associated terminals are mounted in a weatherproof plastic moulded enclosure which is fitted with two CM20 20mm cable glands.

The plastic enclosure is mounted on a steel channel which carries the actuating arm. When the unit detects mis-alignment, the actuating arm rotates 90° to a horizontal position allowing it to be seen from along the conveyor.



### Certification

The Belt Alignment Switch is certified intrinsically safe to the CENELEC standard EN50 020 category EEx ia I, the certificate number is SCS Ex 98D2262. The switch contacts can be used to switch an intrinsically safe circuit with the following characteristics:  $U_{max} = 50$  volts;  $I_{max} = 100$ ma.

### Switch Rating

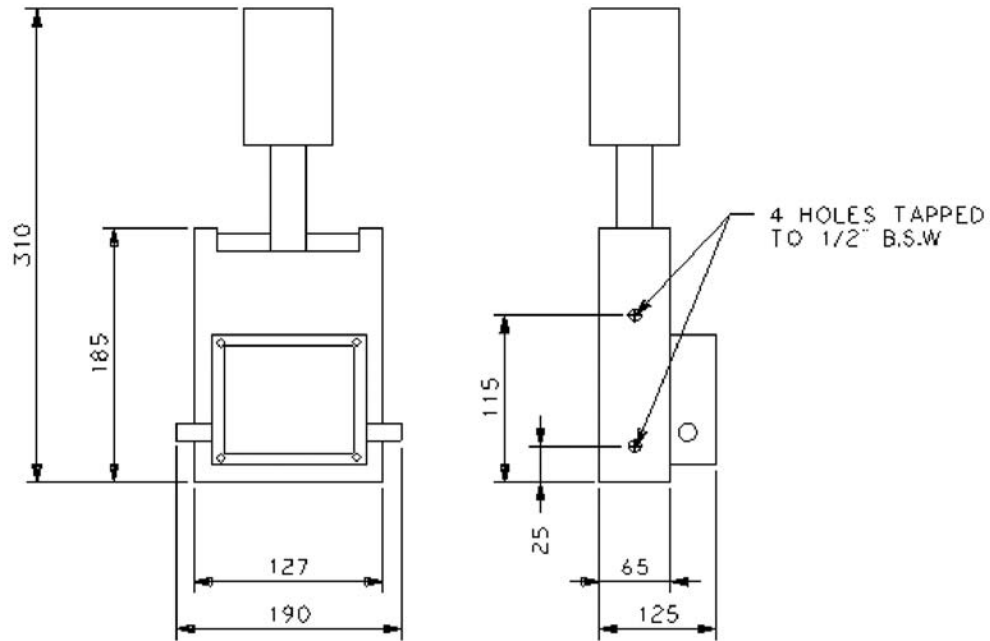
The unit is fitted with a single-pole changeover microswitch rated at 250volts ac; 10amps.

### Ordering Details

When ordering, please specify code number HC35382 for a single unit, normally two units are required.

## Dimensions

The overall dimensions are shown below:



## Davis Derby Ltd

Chequers Lane • Derby • England • DE21 6AW

Telephone +44 (0)1332 341671; Fax +44 (0)1332 372190;

e-mail: [sales@davisderby.co.uk](mailto:sales@davisderby.co.uk). WEB site [www.davisderby.co.uk](http://www.davisderby.co.uk)

